

Without additional C1_1-C4_2

SR4BL1 $R = 15.9M \text{ Ohm} / fc$

SR4BL2 or SR4BL3

$R = 159M \text{ Ohm} / fc$

With additional C1_1-C4_2

SR4BL1 $R = 159k \text{ Ohm} / \langle \langle CF * 10^6 + 0.01 \rangle * fc \rangle$

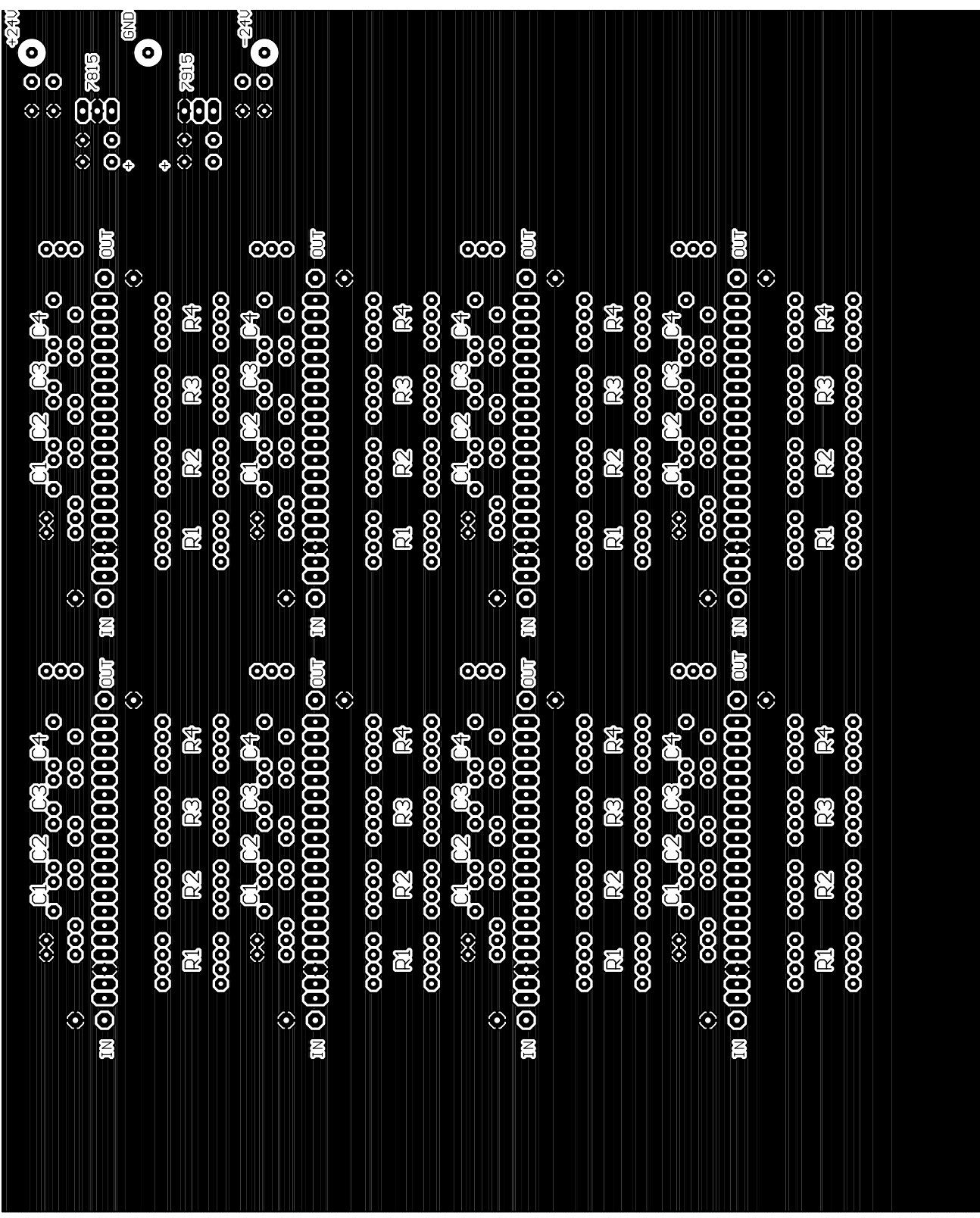
SR4BL2 or SR4BL3

$R = 159k \text{ Ohm} / \langle \langle CF * 10^6 + 0.001 \rangle * fc \rangle$

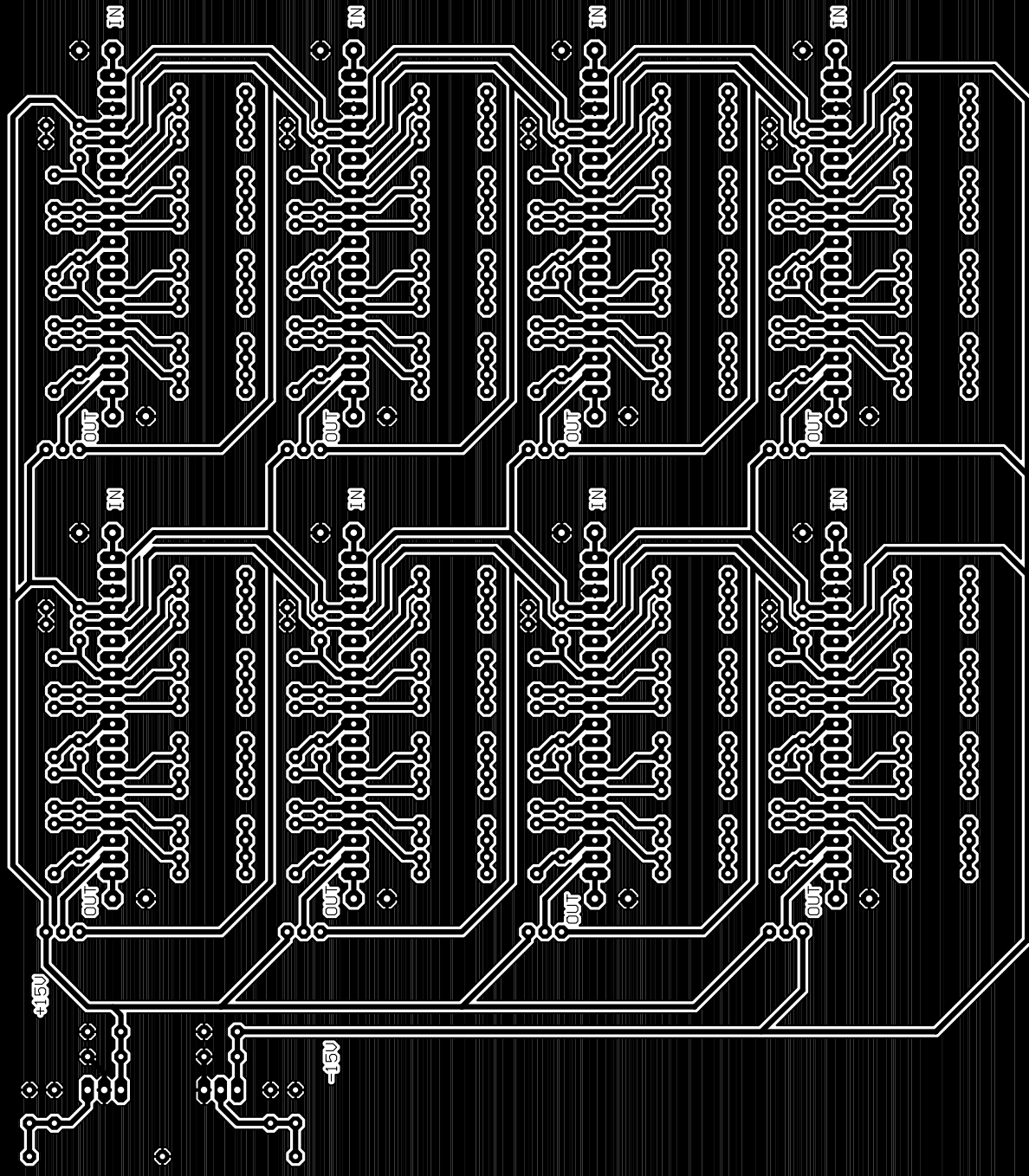
Created:		TAMA project, NAO Mitaka, Tokyo, Japan	
Date	Name	Description:	
		NF SR Series	
Changed:			
Date	Name		
File: anti_alias		Saved: 2001/02/11 01:35:24	
Sheet: 1/1		Printed: 2001/02/11 15:52:10	

FRONT

CONNECTOR



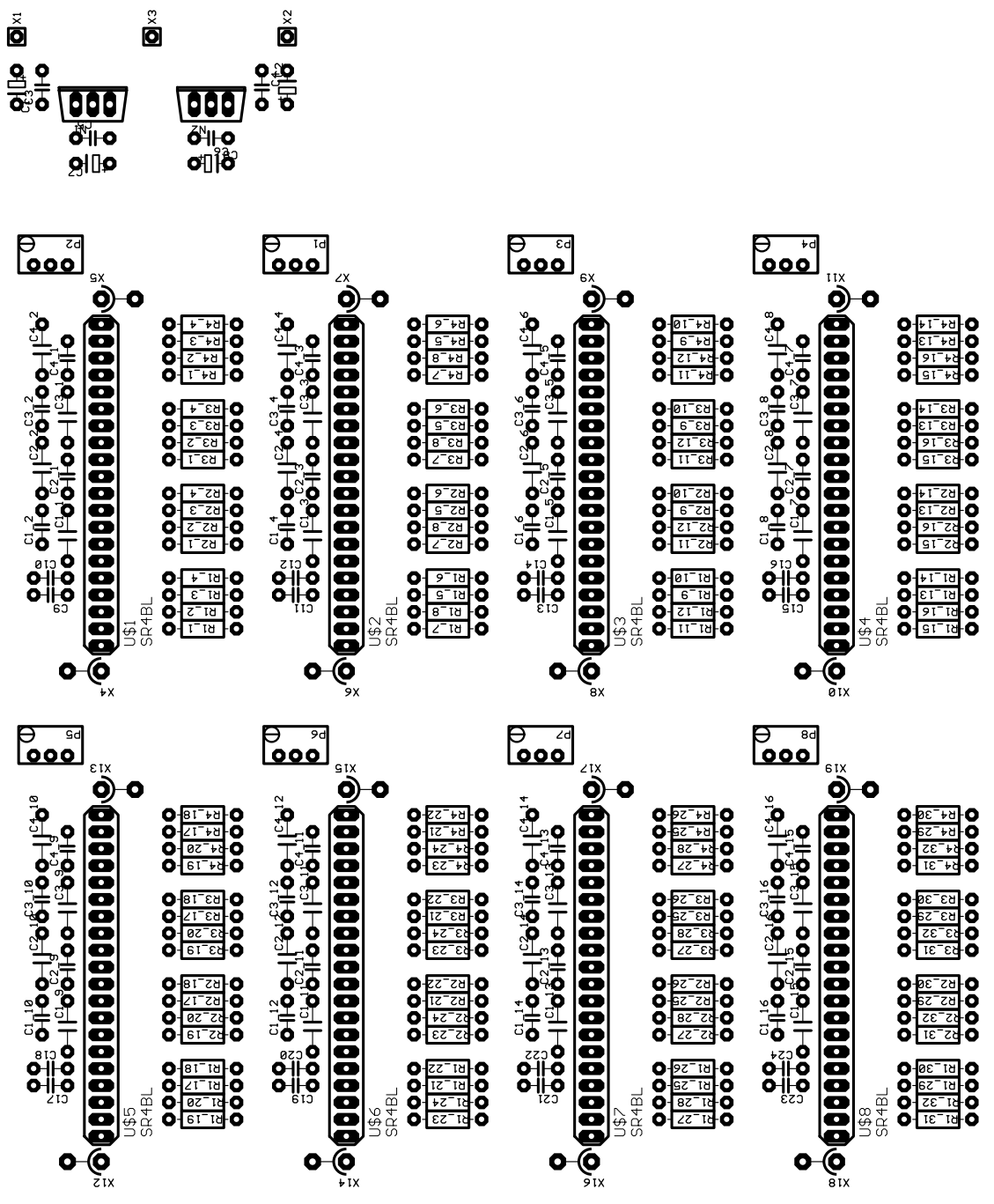
CONNECTOR



8ch SR Filter (01/02/11) board by K. Arah

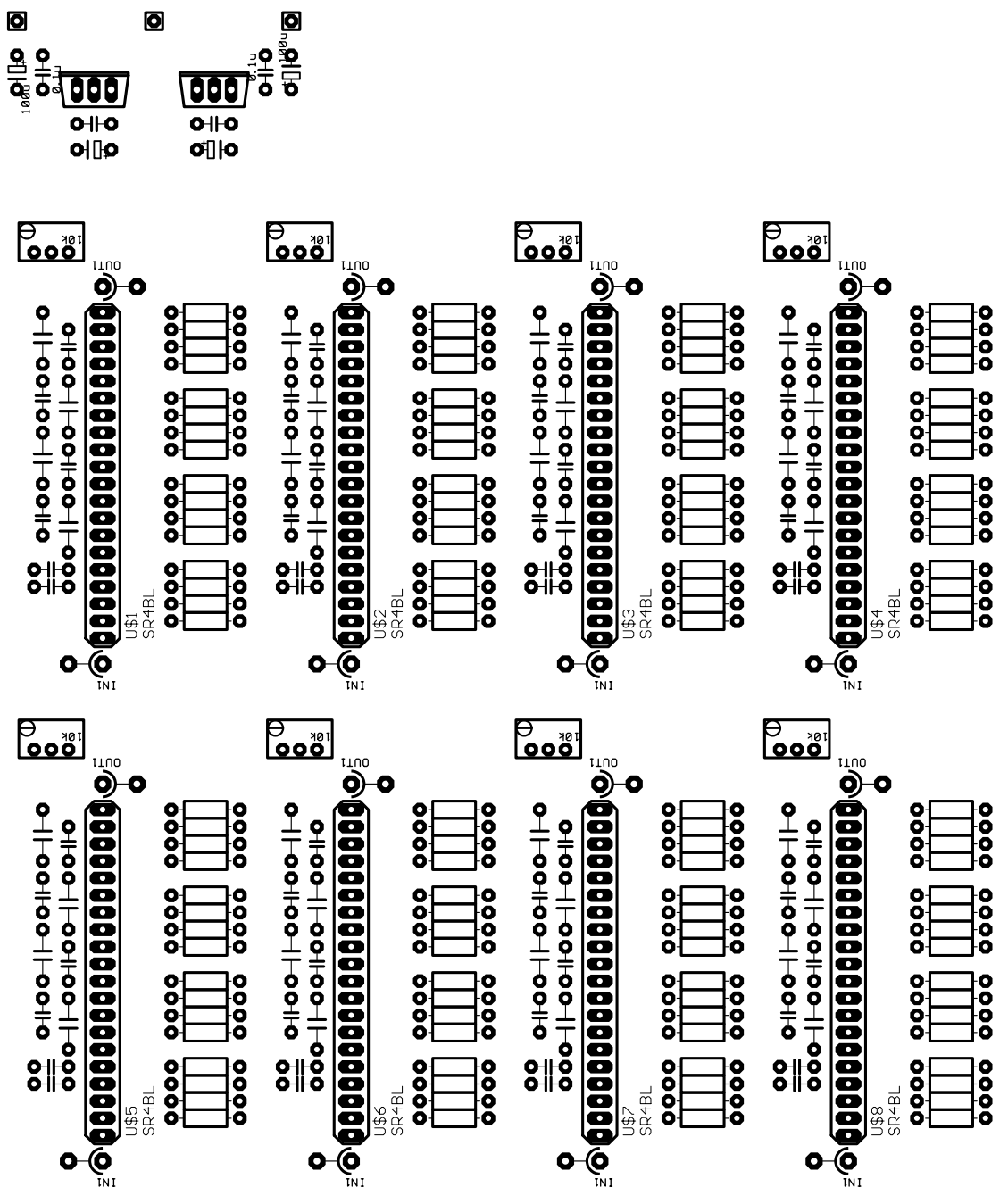
FRONT

FRONT



CONNECTOR

FRONT



CONNECTOR