

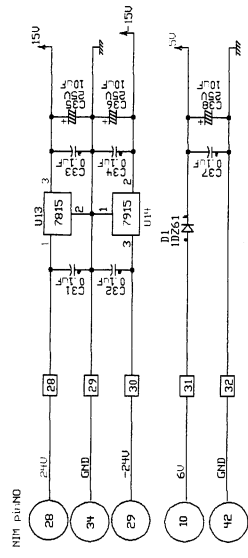
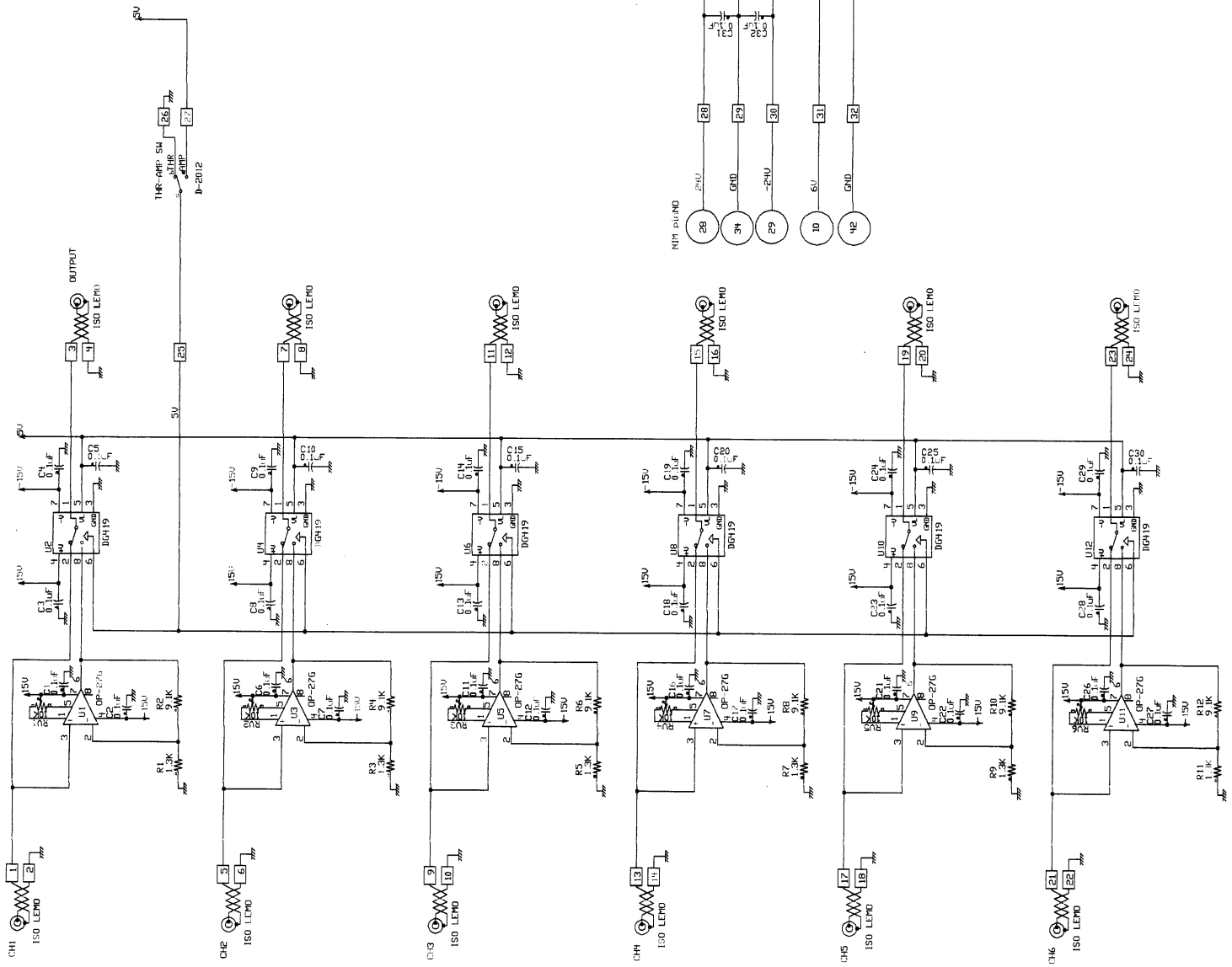
LIGHT LEVEL AMPLIFIER

TYPE LLA-024

国立天文台 殿

2002年4月22日

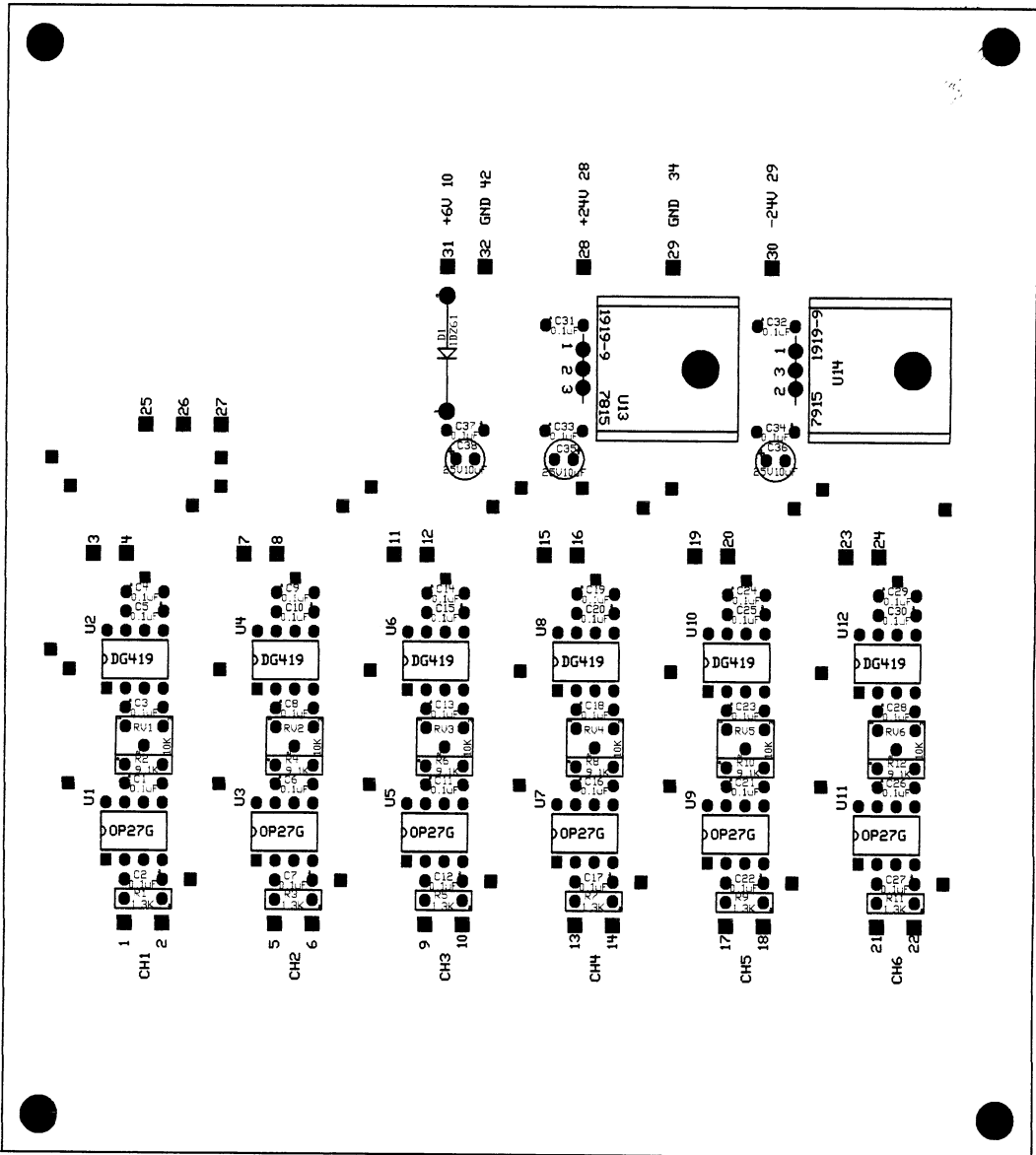
株式会社エマック



LIGHT LEVEL (AMPL II) R  
 LIT-LEDE SCH  
 210271/17 ENAC T.X0000

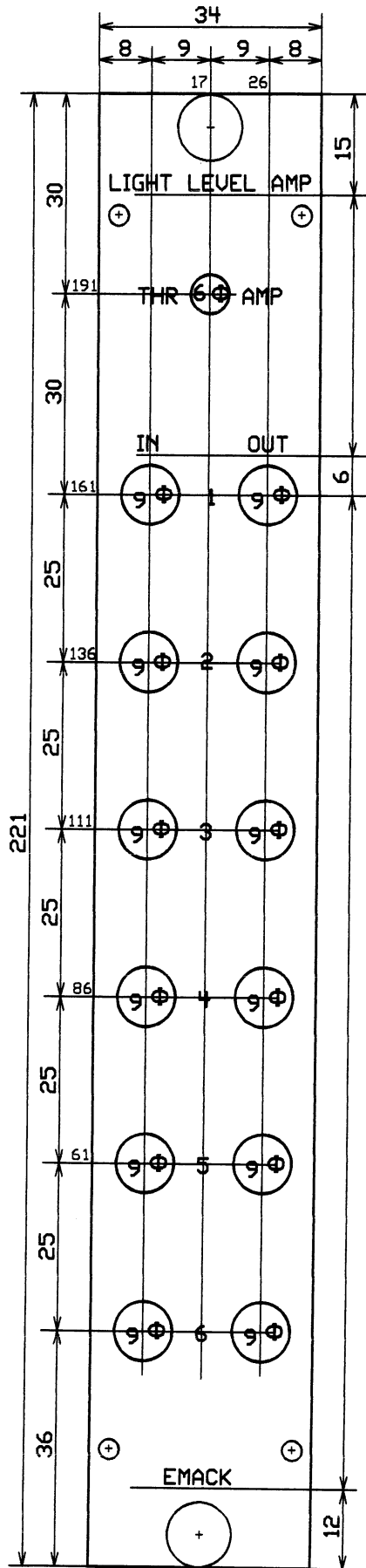
152\*139

Left



Down

0160



LIGHT LEVEL AMPLIFIER  
 LIT-LEVE.DWG  
 Scaling factor 1

2002/4/17 EMAC T.KONDO