



# ANALOG MODULES, INC.

*Specialists in Analog and Laser Electronics*

## MODEL 5706 INTERFACE DESCRIPTION 05/03/2001

PIN	SIGNAL NAME	DESCRIPTION
1	PROGRAM RETURN	0 to 10V control differential input return (reference Figure 1).
2	PROGRAM VOLTAGE	0 to 10V control differential input (reference Figure 1).
3	OVER CURRENT FAULT	Open drain output. FET rated to 40V, 100mA. Low condition indicates commanded current is exceeding adjustable limit (reference Figure 2). Requires external pull-up resistor.
4	TEMPERATURE TEST POINT	Represents charger temperature as a DC voltage through 1k $\Omega$ of output impedance (reference figure 3). Refer to temperature test point data chart. Shutdown occurs at approximately 80°C.
5, 17	SIGNAL RETURN	Used for all signal output and input returns not otherwise specified.
6	RESERVED	
7	INHIBIT RTN	Return for primary inhibit (reference Figure 4).
8	PRIMARY INHIBIT	Opto-isolated; 5V to inhibit (approx. 10mA, reference Figure 4)
9	24V <sub>out</sub>	+24 volts output at 150mA max.
10	CURRENT MONITOR	0-10 volt output through 1k $\Omega$ equals 0-full scale output current (reference Figure 5).
11	LOAD VOLT MONITOR	0-10 volt output through 1k $\Omega$ equals 0-full scale output voltage (reference Figure 6).
12	OVERTEMP OUT	(16V maximum) Open collector output rated to 16V and capable of sinking up to 15mA. Fault indicated by low output signal (reference Figure 7).
13	NC	
14	RESERVED	
15	12V <sub>out</sub>	+12 volts output at 50mA max.
16	RESERVED	
18	NC	
19	NC	
20	NC	
21	NC	
22	NC	
23	NC	
24	NC	
25	NC	

# 5706 INTERFACE CIRCUITS

FIG. 1 PROGRAM VOLTAGE

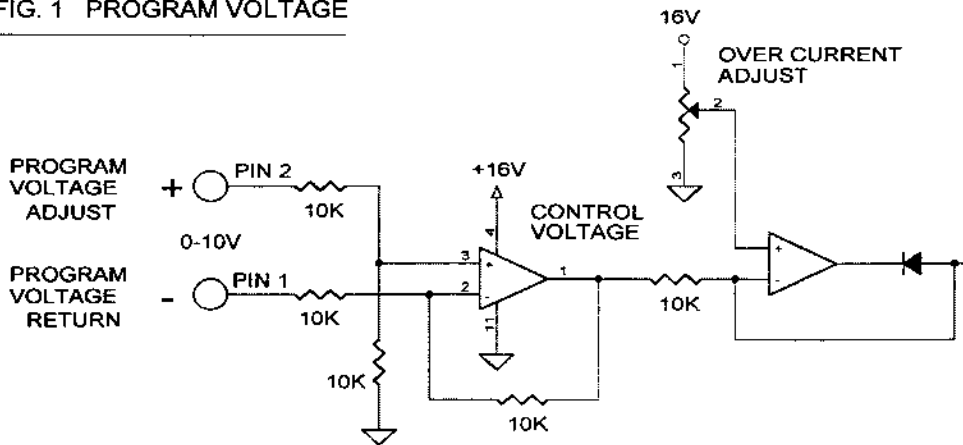


FIG. 2 OVER CURRENT FAULT

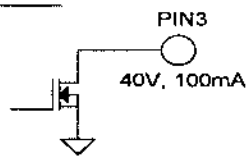


FIG. 3 TEMPERATURE TEST POINT

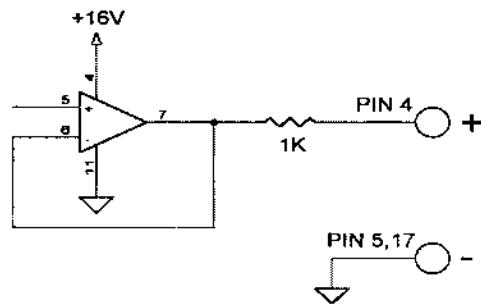
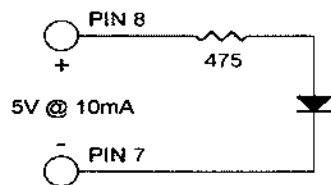


FIG. 4 INHIBIT



5953\_2

5706  
INTERFACE CIRCUITS

FIG. 5 CURRENT MONITOR

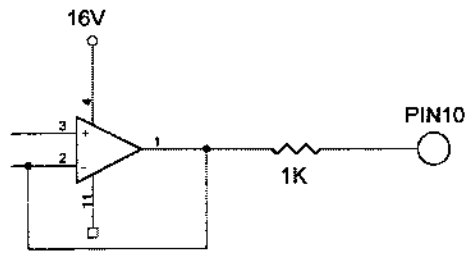


FIG. 6 VOLTAGE MONITOR

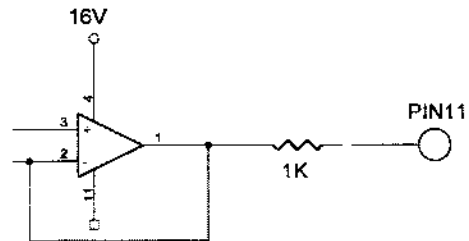
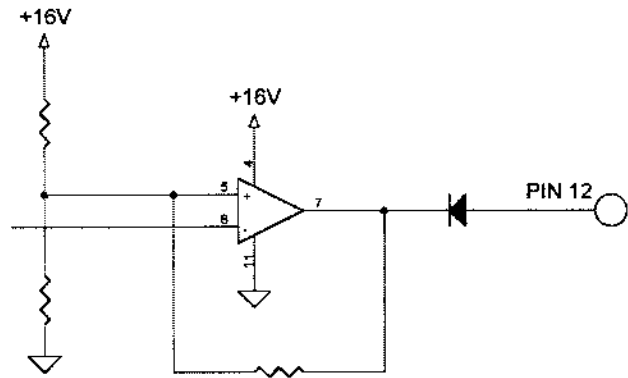


FIG. 7 OVER TEMP OUT



5953\_2

## TEMPERATURE TEST POINT DATA

Temperature In Centigrade	Test Point Voltage	Temperature In Centigrade	Test Point Voltage
20°C	3.29	56°C	6.61
21°C	3.39	57°C	6.68
22°C	3.49	58°C	6.75
23°C	3.60	59°C	6.82
24°C	3.70	60°C	6.87
25°C	3.80	61°C	6.93
26°C	3.90	62°C	6.99
27°C	4.00	63°C	7.05
28°C	4.11	64°C	7.11
29°C	4.21	65°C	7.17
30°C	4.31	66°C	7.22
31°C	4.42	67°C	7.29
32°C	4.51	68°C	7.33
33°C	4.62	69°C	7.38
34°C	4.71	70°C	7.43
35°C	4.82	71°C	7.47
36°C	4.91	72°C	7.52
37°C	5.01	73°C	7.57
38°C	5.11	74°C	7.61
39°C	5.21	75°C	7.64
40°C	5.30	76°C	7.70
41°C	5.39	77°C	7.73
42°C	5.49	78°C	7.77
43°C	5.57	79°C	7.81
44°C	5.67	80°C	7.84
45°C	5.75	81°C	7.88
46°C	5.84	82°C	7.92
47°C	5.92	83°C	7.94
48°C	6.01	84°C	7.98
49°C	6.09	85°C	8.00
50°C	6.17	86°C	8.03
51°C	6.25	87°C	8.05
52°C	6.32	88°C	8.09
53°C	6.39	89°C	8.11
54°C	6.47		
55°C	6.55		